

Urostomy Drain Tube Adapter

The Hollister Urostomy Drain Tube Adapter is designed for use with Urostomy Pouches 14xx, 390x, 84xx, 890x, and 184xx.

Instructions for Use

Applying Adapter

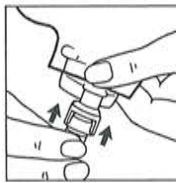
Before applying adapter, empty pouch and close drain valve.

1. Hold valve by its base and slide adapter onto lower portion of valve until it snaps over the raised retainer ring.
2. Insert tubing connector on bedside collector into end of adapter.
3. Rotate drain valve to full open position.

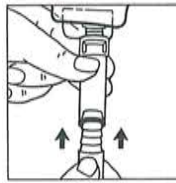
Removing Adapter

Close drain valve before disconnecting adapter.

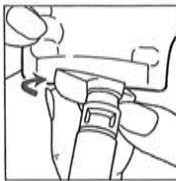
4. Grasp base of drain valve with one hand. With other hand, grasp and squeeze connector portion of adapter and pull adapter off valve.



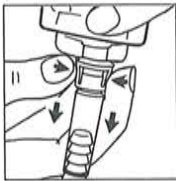
1



2



3



4