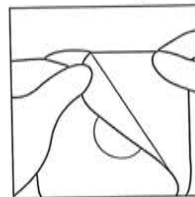
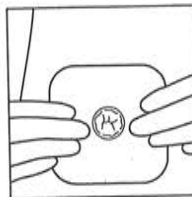


1



2



3

Hollister Skin Barriers

Directions for Application

Be sure the skin is clean and dry. Be especially careful to avoid any oil or soapy residue that could interfere with adhesion. Remove hair in the vicinity of the stoma.

NOTE: If the skin barrier is being used for other purposes, cut the barrier to match the area to be protected.

Stoma Care Use

1. Measure the stoma with a measuring guide. Select the smallest opening that fits comfortably around the stoma without actually touching it. Trace the outline from the measuring guide onto the skin barrier backing paper. Cut the opening in the skin barrier.
2. Peel the protective backing paper from the skin barrier.
3. Center stoma in the skin barrier opening. Smooth the barrier onto the skin and hold in place for 30 seconds. Be careful to avoid wrinkles.

Seal any exposed skin at the base of the stoma with a skin protective paste. Adhesive tape may be used to frame the outer margin of the skin barrier for additional support. Apply the appropriate stoma pouch or collector.