



Introduction

A sling is an item of moving and handling equipment, which is used with a mechanical lift in order to facilitate the transfer of a resident. A sling comprises a specially designed and constructed piece of fabric, which is placed under and around a resident before being attached to the spreader bar/cradle of a lift to raise, transfer and lower the resident.

When selected and used correctly, a sling and lift will achieve a safer transfer, reducing the risks associated with manual handling.

FIM Score

(Function Independence Measure)

A widely used assessment tool to classify a person's function from independence to total assistance in seven levels.

7. Complete Independence

Another person is not required for the activity which is performed safely without modification or outside assistance within a reasonable time.

6. Modified Independence

Another person is not required for the activity but may need an assistive device, more than reasonable time giving a risk consideration.

5. Supervision or set up

Someone required to help by observation, encouragement without contact.

4. Minimal Assistance

Someone required to help - by touching - subject makes 75% or more of the effort.

3. Moderate Assistance

Someone required to help by more than touching - subject makes 50% - 75% of the effort.

2. Maximal Assistance

Complete dependence. Subject makes less than 50% but at least 25% of effort.

1. Total Assistance

Complete dependence. Subject makes less than 25% of effort.

Please note that staff in ALL areas must have immediate access to at least one mobile passive lift for use in the event of an emergency such as the retrieval of a fallen person. A passive lift suitable for a very heavy person should also be accessible within the facility/ hospital, and all staff should be aware of the system for accessing the lift as required. For example, in the event of an unplanned admission of a very heavy resident into Accident and Emergency.

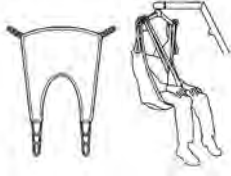
Please note:

It is very important to use the correct sized sling and ensure it is properly fitted before attempting to lift. This will ensure the person being lifted feels safe, dignified and comfortable. It will also provide the caregiver with confidence that they can achieve the transfer that they wish and that the procedure will be executed in an effective and safe manner. This guide aims to assist those responsible for the provision of slings by outlining some key factors to be addressed in the selection of the most appropriate type of sling for a resident. Guidance is then given as to which sling from the HOYER range will best meet these requirements. HOYER has an extensive range of slings. Our slings are a reflection on many years of refinements that make our range one of the most comfortable and flexible in the market place today.



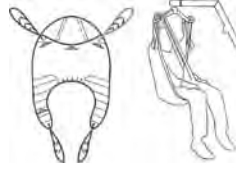
Sling Models

The Hoyer range of slings has been designed with a number of features aimed at meeting varied lifting requirements and applications. Each sling is described briefly below. Note FIM scores have been provided as an assessment tool to classify a person's function from independence to total assistance in 7 levels.



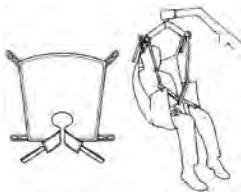
Quick fit/Universal Sling (Spreader Bar: 6 Point)

This sling is an easy-to-fit, general-purpose sling designed to suit 85% of residents. It is simple to use and is available in all sizes from XS to XL. **FIM Scores: 1 and 2 and any other person from the floor**



Full Back (Spreader Bar: 6 Point)

This is a more specialized sling. It incorporates integral boned head support and padded leg pieces and is available in all sizes from XS to XL. The correct size will fit snugly and give full protection for residents who go into extension, or have involuntary movements or behavioral problems. **FIM Scores: 1 and 2 and any other person from the floor**



Quick Fit Deluxe Sling (Spreader Bar: 6 Point)

This sling is a development of the Quick Fit design and is suitable for 95% of residents. It can be used for amputees following assessment, and is available in all sizes from XS to XL. **FIM Scores: 1 and 2 and any other person from the floor**



Comfort Sling (Cradle: 4 Point)

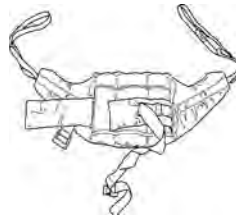
This is a more specialized sling. It allows correct positioning to be made via the 4-point cradle and uses the Securi3 sling connection system ensuring no inadvertent detachment of the sling from the cradle. It incorporates a removable comfort pad for head support and snuggles the resident providing full protection for residents who go into extension or have involuntary movements or behavioral problems. It is available in all sizes from XS to XL. **FIM Scores: 1 and 2 and any other person from the floor**



Access/Toileting Sling (Spreader Bar: 6 Point)

This sling is designed specifically to facilitate the toileting procedure by allowing the removal of clothing. It is NOT a general-purpose sling and will suit only 25% of residents. Residents must be in a sitting position to use this sling. **FIM Scores: 2 or 3 following careful assessment**

An assessment MUST be carried out when using the access sling as it can be dangerous when used on the wrong resident.



Standing Sling (Stand-aid)

The standing sling is suitable for those residents who have a greater degree of weight bearing ability. It allows excellent access for toileting and is easy to fit, providing quick and effective transfers. The adjustable waist strap; the non-slip back pad ensures the sling does not ride up during the transfer. This sling can be dangerous, however, when used with the wrong resident, so a careful risk assessment is advised. **FIM Scores: 3 and 4**



Transport Sling (Stand-aid)

The transport sling is suitable for those residents with a degree of weight bearing ability. It is easy to fit, allowing quick and effective transfers. The adjustable waist strap. **FIM Scores: 2, 3 and 4**

Hoyer Sling Features



Colored binding provides clear recognizable size information.



Colored loop straps, which provide adjustment and the correct angle positioning for the 6-point spreader bar system.

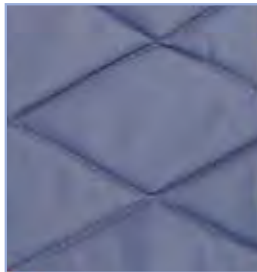


Clear labels provide all the information required together with a line drawing showing how our slings fit.



Leg support widths (1) offer optimal support, while not cutting into the knee or groin area, and modesty loops (2) stop the residents legs from splaying while transferring.

Centerline markers aid the caregiver in the correct positioning of the sling, especially when inserting the sling before an off the bed or floor transfer.



Made from polyester, Hoyer slings are durable, soft and comfortable. Padding provides additional comfort and support to delicate areas and our webbing straps have covered ends to protect residents' skin.

The angle of the straps has been carefully calculated to ensure the correct posture and comfort of the resident.



Head supports ensure correct positioning during transfer.

Mesh slings are ideal in wet environments, providing rapid draining and drying.



Handles on the sides of our slings are optimized to ensure correct handling. The grey color of our slings means contamination is easy to spot - but the polyester fabric isn't prone to staining, and is easily laundered.

Cradle Options

The Hoyer professional lift range has the option of two cradles that provide the caregiver greater choice in selecting the most appropriate sling and cradle for the task. The Presence and Stature can be used with either the 6-point spreader bar or the 4-point positioning cradle.



6-point spreader bar

The 6-point spreader bar uses slings with webbing loops, which allow positioning adjustments to be made by selecting the different colored loops. The attachment straps at shoulder level determine the position of the back, ranging from upright through to semi-reclined and reclined. Similarly, the attachment straps at the legs determine the approximate degree of flexion at the hip, from around 45° to 90°.

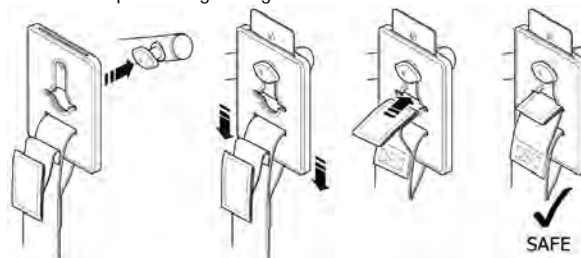
The position achieved by adjusting the loops will depend upon the height and build of the resident. The rule of thumb is the shorter the shoulder straps the more upright the resident will be.



4-point positioning cradle

Alternatively the 4-point positioning cradle uses the Securi3 safety clip system and adjustment is made by rotating the cradle handle either down or up to obtain an upright or reclined position for the resident.

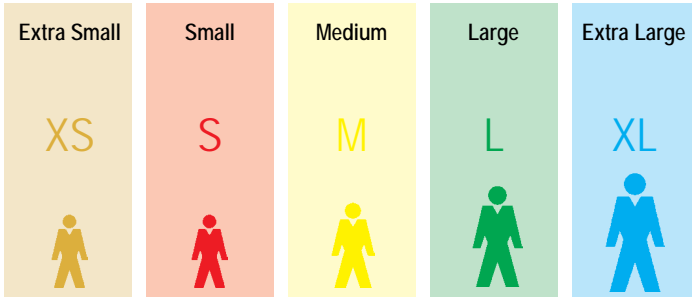
Note: The Comfort sling utilizes the Securi3 clip system and this was especially designed to ensure NO inadvertent detachment occurs. The 3 key stages assure the resident and caregiver of safety and comfort positioning throughout the transfer.



Both cradles have their place, but more importantly it allows the caregiver to choose exactly the correct sling for the resident and task in question.

Range of Sizes

Most slings are available in a range of sizes to accommodate variety in height, shape and weight of residents. All these factors must be taken into consideration when selecting the appropriate sling for the residents. Sizes are available from XS to XL and full details on our slings can be found in our order form.



Weight Capacity

Stated on the label is the safe working load, 500 lbs. Some slings vary, so always check the label before use.



Identification Label

The identification label provides essential information about the sling such as:

- Model reference number
- Type of sling
- Size
- Testing mark CE or similar
- Date of Manufacture
- Care Instructions
- Safe Working Load (SWL)
- Bar code
- Identification picture

Note: Space provided for a unique Serial Number that enables traceability, which can be used for inspection and audit records.

User Guide

A detailed User Guide is provided with all slings. It contains essential information concerning machine washing and general care of the sling.

Sling Safety Information (guidance)

- Maximum wash temp: 185°F (85°C), non-enzyme detergent
- Wash 160°F (71°C) for 3 minutes
- Wash 145°F (63°C) for 10 minutes
- Do not tumble dry at high temp - Air dry, cool tumble dry or dry at very low temperature
- Ability to wash may help against MRSA



Size & Weight Range Guide (Approx.)

Please note the following sling guides are recommendations only. A full risk assessment must be conducted before any sling is selected. This will ensure safety for the resident and the caregiver.

Sling Range Weight Recommendation Chart (GUIDE)						
Values shown: kgs/lbs						
	Low		High		Range	
	kg	lb	kg	lb	kg	lb
XS	16	35	45	100	29	65
S	34	75	68	150	34	75
M	57	125	91	200	34	75
L	80	175	136	300	57	125

Other Considerations for Slings

Alternative fabrics are available as SPECIAL ORDERS. However, there is an extended lead-time for these (typically 4-5 weeks). Consult your Hoyer representative for details.

Special Slings

Special slings are “one-off” designs to meet specific requirements of individual residents and can be made to order. The following specials can be ordered.

- Extend loop strap length to suit leg or shoulders
- Add loop to suit
- Remove head support
- Taper leg section
- Add lining to legs or body (synthetic fleece material)
-

Sling Prescription Sheets

Sling prescription sheets are available upon request to facilitate producing a special sling design. Example of sling prescription form.

Weight	Height	Weight	Height	Weight	Height	Weight	Height
150	5'0"	150	5'0"	150	5'0"	150	5'0"
150	5'0"	150	5'0"	150	5'0"	150	5'0"
150	5'0"	150	5'0"	150	5'0"	150	5'0"
150	5'0"	150	5'0"	150	5'0"	150	5'0"

Clinical Support/Advice

Clinicians are available upon request to assist Joerns Healthcare customers by providing clinical information and advice in relation to Hoyer slings and other products.

Moving and Handling Training

The correct equipment coupled with appropriate training can help to minimize the risks associated with manual handling. Joerns Healthcare has developed a comprehensive range of moving and handling training programs aimed at meeting the needs of all caregivers. Programs are flexible, with courses designed to suit individual circumstances and needs. The overall aim is to create “a safer environment”.

Sling Support Levels and Commode Openings

Different types of slings provide different levels of support for the resident being lifted. The support level is determined by the shape and structure of the fabric, with the main body of the sling providing support to the back and head (photo 1) and the leg straps providing support to the thighs, hips and buttocks (photo 3/4). The shape of the sling will also determine the presence and size of a commode opening. (figure 2 below).



Selecting the Best Type of Sling

Selecting a sling for an individual resident involves more than simply measuring their size and deciding what the sling will be used for.

Basic factors to take into consideration are the level of support required from the sling and whether a commode opening is necessary. However, to be sure that a sling meets specific requirements and is the most appropriate sling available, many further aspects need to be considered as part of the selection process. Some of these are discussed briefly here.

Information about the task(s)

In order to be sure the sling selected will be suited to its required use, it is necessary to determine the type of transfer task(s) desired, together with the frequency with which they will occur. This relates closely to the functional requirements of the sling. For instance: a sling that is to be used for toileting will require a commode opening.

Information About the Caregiver(s)

When selecting slings, it is important to be mindful of the person(s) who will be fitting the sling and using the lift. Their abilities and limitations - especially experience and training - must be considered. Some slings are more complicated than others to fit and a caregiver may be reluctant to use a sling if the process of fitting it is too complex. The number of caregivers available to fit the sling as well as the total number of caregivers involved in a residents' care may also be important considerations - a range of caregivers may have a range of capabilities.

Information About Other Equipment

It is necessary to establish the sling's compatibility with other equipment, especially the lift and the lifting system. It is also important to identify any associated equipment involved in transfers, such as seating, beds, gurneys, toilets, and therapy equipment, to ascertain that the lift and sling will work effectively with these items.

Selecting the Type of Sling for the Most Common Task

To simplify the process of sling selection, **HOYER** has developed a chart to guide you in the appropriate use of each sling and task. There will, of course, be exceptions to this guide, but this reference enables a view of what tasks can be completed.

1) Use only with a net version

Sling Type	HOYER Lift	Toilet	Commode to bath¹	Chair to Chair	Bed to Chair	Floor to Bed	Chair to Commode
Access	Advance/Presence	■		■			■
Quick Fit Del	Advance/Presence	■	■	■	■		
Quick Fit	Advance/Presence	■	■	■	■		
Full Back	Advance/Presence	■		■	■	■	
Comfort	Stature	■	■	■	■	■	
Standing	Arise	■		■	■		■
Transport	Arise	■		■	■		■



About Joerns Healthcare

Joerns Healthcare provides the complete solution to moving and handling with a range of compatible lifts, slings and accessories designed to meet the needs of both resident and caregiver. Besides **Hoyer** slings, the Joerns Healthcare moving and handling range includes:

- Ceiling mounted lifts
- Mobile lifts
- Extended warranty and service options
- Moving and handling training packages

We trust you have found this guide both useful and informative.

