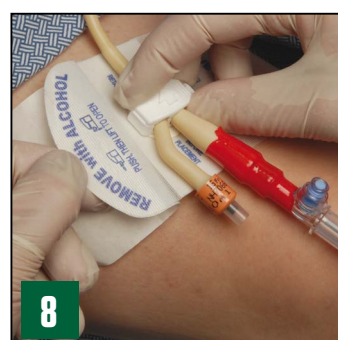
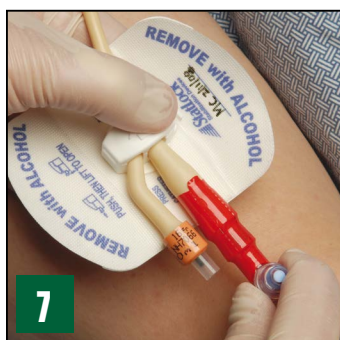
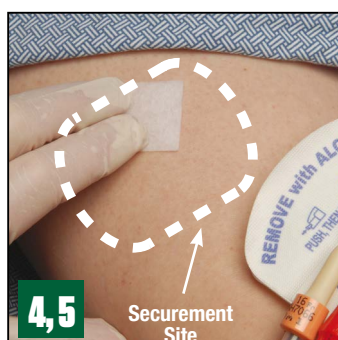
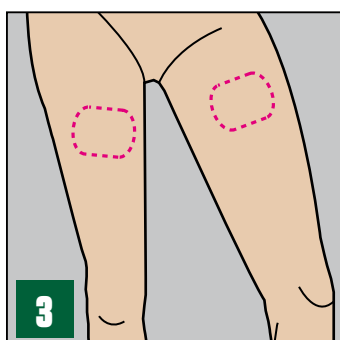
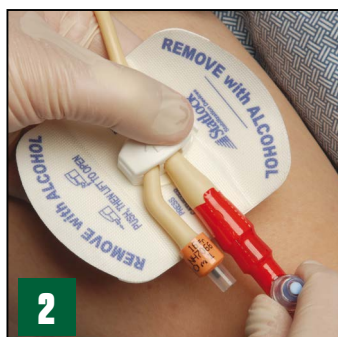
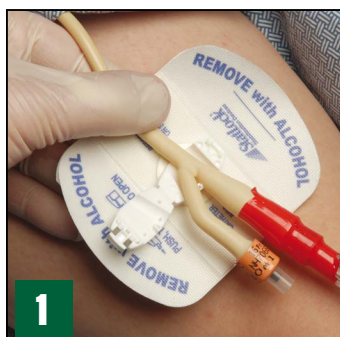


# STATLOCK®

FOLEY STABILIZATION DEVICE

Designed to stabilize compatible urinary catheters

## Application Technique



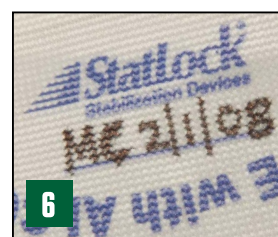
### Prep

1. Place Foley catheter into retainer. Directional arrow should point towards catheter tip, and the balloon inflation arm should be next to the clamp hinge.
2. Close lid by placing your fingers under the pad and pressing the grip markers at the end of the clamp with your thumb, being careful to avoid pinching the catheter.
3. Identify proper securement site by gently laying the STATLOCK® Stabilization Device straight on the front of the thigh, then back up one inch towards the insertion site.\* Make sure leg is fully extended.

– Gently place the STATLOCK® Stabilization Device off to the side, away from the selected securement site.

4. Cleanse and degrease securement site with alcohol, or per hospital policy and procedure. Let skin dry. Be sure to clean area larger than securement site.
5. Apply skin protectant using both pads, in direction of hair growth, to area larger than securement site. Allow to dry completely (10-15 seconds).
6. Using permanent marker, write initials and date of application on STATLOCK® device anchor pad.

NOTE: Always secure catheter into the STATLOCK® Stabilization Device retainer BEFORE applying adhesive pad on skin.



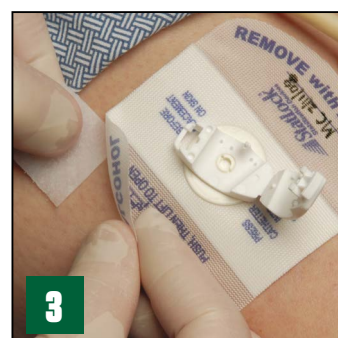
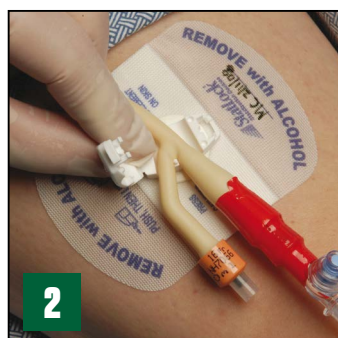
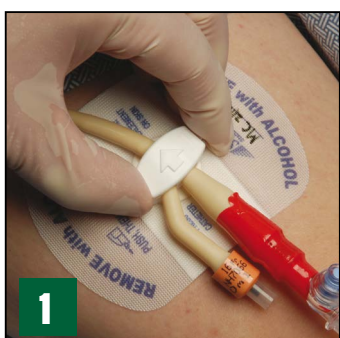
### Place and Peel

7. Align the STATLOCK® Stabilization Device over securement site leaving one inch of catheter slack between insertion site and the STATLOCK® device retainer.\* Make sure leg is fully extended.
8. While holding the retainer to keep the pad in place, peel away paper backing, one side at a time, and place tension-free on skin.

## Daily Maintenance

1. The STATLOCK® Stabilization Device should be assessed daily and changed when clinically indicated, at least every seven days.
2. If pad becomes soiled, wash with soap/water, saline or hydrogen peroxide. Do not use alcohol or prepackaged bathing systems, which could lead to early lifting.
3. If showering/bathing, cover with plastic wrap or waterproof dressing.
4. Conduct skin assessment prior to application and repeat daily per facility protocol.
5. Use clinical judgment on the removal of the STATLOCK® Stabilization Device if the patient experiences any fluid shifts that may interfere with skin integrity.

## Removal Technique



### Disengage

1. Open retainer by pressing release button with thumb, then gently lift to open.
2. Remove Foley catheter.

### Dissolve

3. Wipe the edge of the pad using at least 5-6 alcohol pads until a corner lifts. Then continue to stroke undersurface of pad in a back-and-forth motion by squeezing the alcohol out to dissolve the adhesive pad away from the skin.

Foley catheters are intended for use in the drainage and/or collection and/or measurement of urine. The most common risk is urinary tract infection. STATLOCK® devices should be monitored daily and replaced when clinically indicated, at least every 7 days. Catheter insertion site should be treated per established hospital policy and procedure. STATLOCK® devices are contraindicated on patients with known tape or adhesive allergies. Please consult product inserts and labels for any indications, contraindications, hazards, warnings, cautions and directions for use.

\*For long-term male Foley catheter users, ideal location for stabilization is the abdomen to prevent meatal damage and erosion.

STATLOCK® devices are sterile and latex-free.

Bard and StatLock are trademarks and/or registered trademarks of C.R. Bard, Inc.

©Copyright 2014 C.R. Bard, Inc. All rights reserved.  
 1410-07 R10/14 BG P10/14 5M