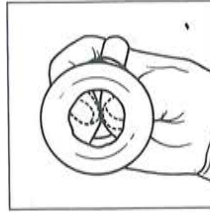
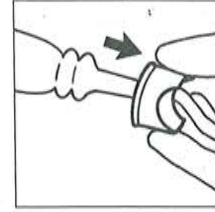


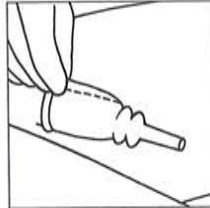
1



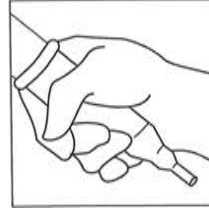
2



3



4



5

### US GB Male Incontinence Sheath/Catheter

#### Instructions for Use

Wash penis. Do not use lotion, powder, or emollients on penis or in the water, as they might impair adhesion. Rinse penis thoroughly; then **dry completely**. Remove any lint that may have accumulated from the towel.

Pubic hair should be pushed away from penis or trimmed to avoid any discomfort resulting from contact with the sheath/catheter's adhesive.

#### Applying the Sheath/Catheter

Determine proper sheath/catheter size by using the Hollister® Sizing Guide.

After selecting proper size, remove sheath/catheter from its package by tearing along the perforated line. The sheath/catheter is supplied with a plastic collar, which presents the sheath/catheter and its inner flap in a position ready for application.

1. Pinch sheath/catheter closed with the thumb and forefinger in the finger-cuts.
2. Position sheath/catheter on penis, so that the tip of glans (head of penis) butts against the pinched thumb and forefinger. The glans should protrude into the opening of the inner flap which should fit snugly on the glans to prevent the backflow of urine. Do not position the inner flap too far forward. Do not position the entire glans through the inner flaps. If applying a sheath/catheter to an uncircumcised penis, allow the foreskin to remain in its natural position. Take care not to pinch or retract the penis.
3. While maintaining this correct position, slowly unroll sheath/catheter onto shaft of penis with as little wrinkling as possible until it is fully extended. **Do not force the plastic collar onto the penis.** Remove and discard the plastic collar after sheath/catheter is in place.
4. Seal excess material to itself by pinching it together, thus closing any leakage channels and providing a secure seal.
5. Once sheath/catheter is in place, apply firm pressure around sheath/catheter to seal it against the skin. Do not attempt to reposition sheath/catheter. If penis was erect during application, check the seal of the sheath/catheter once penis becomes flaccid. Seal excess material as described in Step 4.

#### Note:

- If penis is retracted, massage the abdomen at base of penile shaft and press inward. This may cause the penis to temporarily protrude. Draw penis out from the body into its natural position to attain application. Follow the same general application procedure. Once sheath/catheter is unrolled, use a pair of blunt-nosed scissors to cut the bead formed by the remainder of the unrolled sheath/catheter.
- If patient is uncircumcised, leave foreskin in natural position.
- Do not use on irritated or compromised skin.

#### Removing the Sheath/Catheter

- Slowly roll sheath/catheter down penis. Do not remove sheath/catheter abruptly, as it may cause skin irritation.
- Warm, soapy water may be used to soften the adhesive bond.
- Discard sheath/catheter into proper receptacle.