

Visi-Flow®

Irrigation System Irrigator with Stoma Cone Instructions for Use



Read instructions for use.

Compatible for use with both the SUR-FIT® and SUR-FIT® Natura™ Ostomy Systems.

PRODUCT DESCRIPTION

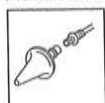
For persons with colostomies for whom irrigation is indicated for evacuation of stool from the colon.

WARNINGS AND PRECAUTIONS

- This irrigation method may not be suitable for all stoma types. Check with your health care professional before you begin the irrigation process to determine the best irrigation method for your stoma.
- Ensure the stoma cone is clean and undamaged before insertion to help prevent injury to the stoma.
- Consult a healthcare professional if persistent bleeding from the stoma is experienced during or after irrigation.
- Persons receiving pelvic or abdominal radiation should consult with their healthcare professional prior to irrigation.

CAUTION: Care should be exercised when using adhesive products around a flush urostomy, especially when associated with megaureters and the absence of a urinary reservoir. Rarely, clinical reports have been documented of the presence of adhesive in the renal collecting system of these patients. Should a mass be detected in the urinary tract, evaluate the continued use of the adhesive product and initiate appropriate clinical management.

PREPARING AND FILLING THE IRRIGATOR BAG



1. Attach stoma cone to tubing. Note: If your health-care professional has recommended the catheter method of irrigation, attach the appropriate catheter instead of the stoma cone.



2. Roll the flow regulator control up until the tubing is completely closed prior to filling.



3. Open the top of the irrigator bag by separating and unsnapping the handles. Place the irrigator bag in the sink and fill it with lukewarm water in the amount prescribed by your healthcare professional.

Check the water level in the irrigator bag by holding it in an upright position with the top of the bag closed. Once the water level is correct, snap handles closed.

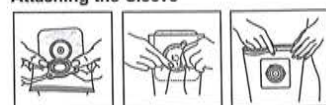


4. Hang the irrigator bag so that it is high enough to allow adequate water flow. If questions arise, contact your healthcare professional.

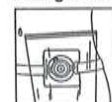
USING THE IRRIGATOR WITH THE IRRIGATION SLEEVE

Apply wafer as directed in instructions for use provided with wafer at least one hour prior to beginning the irrigation procedure.

Attaching the Sleeve



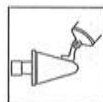
Fitting a Belt (if required)



INSTRUCTIONS FOR THE IRRIGATION PROCESS

IMPORTANT: Before starting the irrigation process:

- Sit on the toilet or on a chair next to the toilet.
- Position the bottom of the irrigation sleeve so it hangs into the toilet bowl.
- Remove entrapped air from the tubing by opening the flow regulator to allow a small amount of water to run through the stoma cone into the toilet.
- Close the flow regulator.



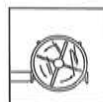
1. Apply a small amount of water soluble lubricant (medical grade) on the stoma cone.



2. Open the top of the irrigation sleeve and position the stoma cone into the stoma using gentle pressure.



3. Holding the stoma cone in the stoma, open the flow regulator and allow water to flow into the colon. The rate of flow can be adjusted by using the flow regulator.



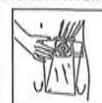
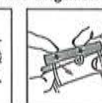
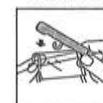
The flow indicator allows a visual check of the rate of flow. If cramping is experienced, do not remove the stoma cone, but reduce or stop the flow of water and gently massage the abdomen until cramps subside. Then open the flow regulator so that the water will again enter the colon slowly.



4. After the prescribed amount of water has entered the colon, stop the water flow by rolling the flow regulator closed. Remove the cone from the stoma and seal the top of the sleeve using the slide seal. Use brush supplied with starter kit to clean stoma cone.



5. After initial evacuation of stool, attach the tail closure to the tapered bottom of the irrigation sleeve and hook to release tab of sleeve.



To open tail closure:



6. After evacuation is complete, rinse the sleeve by running water through the top opening.



7. Remove the irrigation sleeve from the wafer by pulling the tab located at the top of the sleeve flange. Maintain gentle pressure on the wafer as the sleeve is removed.



8. Make sure the wafer is clean and dry before applying a pouch.

DISPOSAL

Dispose of used irrigation system components in adherence with local disposal regulations/requirements. Do not flush components down the toilet.

STORAGE CONDITIONS



Storage temperature.



Keep dry. Avoid high humidity.



Lot/control number



Expiry date

Note: Should irritation occur, discontinue use and consult a healthcare professional.

For more information on ConvaTec products, contact us at the address below.