

# Visi-Flow®

## Irrigation Sleeve

### Instructions for Use



Read instructions for use.

Designed for use with the Visi-Flow® Irrigation System.

#### INDICATION

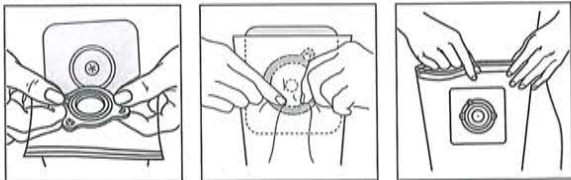
For use by persons with colostomies for whom irrigation is indicated for evacuation of stool from the colon.

#### WAFER APPLICATION AND REMOVAL

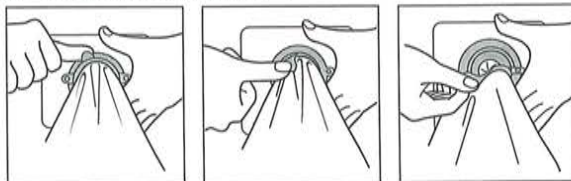
Apply and remove the wafer as indicated in wafer product instructions.

**NOTE:** For one-piece pouch users, the irrigation sleeve can be used with the Visi-Flow® Adapter Faceplate and Adjustable Ostomy Belt (purchase separately). Both the faceplate and the belt must be used with the irrigation sleeve.

#### ATTACHING THE SLEEVE



#### REMOVING THE SLEEVE



#### CLEANING

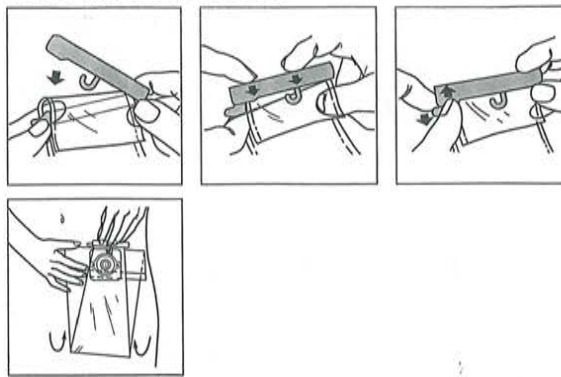


To clean, open sleeve and run rinse water through sleeve opening.

#### FITTING A BELT

If a belt is used, attach to the tabs on the flange and adjust to a comfortable fit.

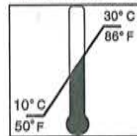
#### USING THE TAIL CLOSURE



#### DISPOSAL

Adhere to local disposal requirements/regulations.

#### STORAGE CONDITIONS



Storage temperature.



Keep dry. Avoid high humidity.



Lot/control number



Expiry date

Note: Should irritation occur, discontinue use and consult a healthcare professional.

For more information on ConvaTec products, contact us at the address below.

Manufactured by:



ConvaTec Inc.  
Skillman, NJ 08558  
1-800-422-8811

ConvaTec Limited, Deeside, CH5 2NU, UK

ConvaTec Canada Ltd.  
Montréal, Québec, Canada  
1-800-465-6302

[www.convatec.com](http://www.convatec.com)

© 2008 ConvaTec Inc.  
®/™ indicates a trademark of ConvaTec Inc.