

Stomahesive®

Skin Barrier

Barrera para piel

Barrière cutanée

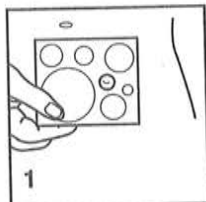
Instructions for Use
Instrucciones de uso
Mode d'emploi



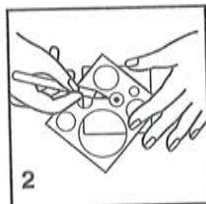
 **ConvaTec**
A Bristol-Myers Squibb Company

ENGLISH—Instructions for Use

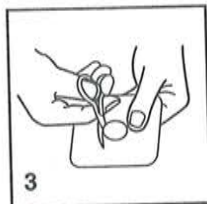
GENERAL INSTRUCTIONS



1. Measure stoma with guide provided. Peristomal skin **MUST** be free from any solvent or greasy substance.

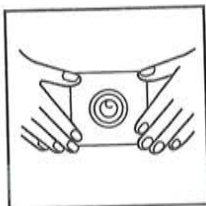


2. Trace stoma size onto the white backing paper, starting at the center of the skin barrier.



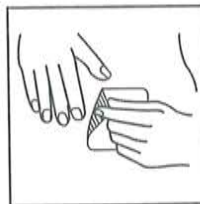
3. Cut along tracing using curved scissors. Remove white backing paper.

WAFER APPLICATION



Center hole over stoma and apply light pressure over skin for 30 seconds. Press the skin barrier in place, paying particular attention to the area closest to the stoma. Place an ostomy pouch on the skin barrier, following application instructions for that product.

WAFER REMOVAL



To remove, gently pull the skin barrier in the direction of hair growth while applying light pressure on adjacent skin. If you experience difficulty removing the skin barrier, the use of an adhesive remover is recommended. It is not necessary to remove all residue.

NOTES:



The skin barrier may remain in place for as long as it is comfortable and secure. Tape the edges to provide extra security.

Stomahesive® Skin Barrier need not be removed while bathing, showering, or swimming.

This procedure should also be followed when using the Stomahesive® Skin Barrier for management of an abdominal fistula or draining surgical wound. If areas adjacent to the draining area are excessively raised, the opening in the skin barrier should be large enough to include the raised areas.

To prevent the skin barrier from adhering to sutures, a sterile dressing may be applied over the suture line prior to application of the skin barrier, especially if removal of the skin barrier within two days is anticipated.

HOW SUPPLIED

	Product	Wafer Size	Order No
	Stomahesive® Skin Barrier - 5 wafers	4" x 4" (10 cm x 10 cm)	21712
	3 wafers	8" x 8" (20 cm x 20 cm)	21715

ConvaTec® offers a complete line of ostomy products. For more information on ConvaTec products, contact your health care professional, ostomy supply dealer, or call 1-800-422-8811 (U.S. only).

In Canada only, call 1-800-465-6302.

In Australia, (03) 596 7722 (Melbourne Metropolitan only) free call 008 335 276.

In New Zealand only, free call 0800 44 1763.

 **ConvaTec**
Division of E.R. Squibb & Sons, Inc.
Princeton, NJ 08543