

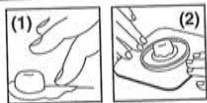


# STOMAHESIVE®

## Paste

### Protective Skin Barrier & Filler

#### Instructions for Use



Read instructions for use. REF Code Number

#### STORAGE CONDITIONS



Storage temperature.

LOT

Lot/ control number



Expiry date

#### PRODUCT DESCRIPTION

Stomahesive® Paste is a convenient, highly effective filler, sealant, and protective skin barrier specifically designed for use around colostomy, ileostomy, or urinary stomas. The paste can also be used to protect exposed skin around fistula sites, between the base of a stoma and the opening in the skin barrier, and as a filler for skin folds, uneven skin surfaces, and scars.

#### CONTRAINDICATION

Do not use on individuals with a known sensitivity to the paste or its ingredients.

#### IMPORTANT:

1. For external use only. Do not apply into an open wound or skin ulcer.
2. Contains alcohol.
3. Should irritation occur, discontinue use and consult a health care professional.

#### DIRECTIONS FOR USE

##### APPLICATION TO SKIN BARRIER

- Prepare the skin barrier as described in the *Instructions for Use* accompanying the skin barrier.
- Apply a ring of paste on the back of the skin barrier around the hole. Do not spread the paste. Wait one minute before applying the skin barrier.

- For best results, squeeze tube from bottom and flatten as you go up.

#### APPLICATION TO SKIN

Apply Stomahesive Paste to fill depressions and irregular skin contours. If required, use a moistened finger or spatula to spread the paste evenly. (1)

#### GENERAL INSTRUCTIONS

- Apply the skin barrier and press down firmly around the base of the stoma. (2)
- Additional paste may be applied to further protect the skin around the stoma at any time.
- Tighten cap securely.

#### REMOVING STOMAHESIVE PASTE

Stomahesive Paste is easily removed after it has been in place for 48 hours. If the paste must be removed sooner, use warm water. It is not necessary to remove all traces of the paste prior to a new application.

#### DISPOSAL

Adhere to local disposal requirements/regulations.

For more information on ConvaTec products, contact us at the address below.

© 2009 ConvaTec Inc.

®/™ indicate trademarks of ConvaTec Inc.