

US One-Piece Pouches

Instructions for Use

For cut-to-fit pouches: Using enclosed stoma measuring guide, measure stoma and select smallest opening that fits comfortably around stoma without actually touching it.

1. Separate front and back pouch panels to avoid cutting pouch. Cut out appropriate stoma opening on cutting guide on back of skin barrier.

Pouch Application

Before applying barrier, make sure skin around stoma is clean and dry.

2. **For drainable pouches:** Apply pouch clamp by folding pouch film around inner bar of clamp and pressing inner and outer bars together.
3. **For drainable pouches with Lock 'n Roll closure:** On outer side of pouch, fold pouch tail three (3) times upward until closure strips meet.
4. Press firmly from the center to outer edges along entire closure strip until pouch is sealed completely.
5. **For urostomy pouches:** Make sure urostomy valve is in the closed position. The teardrop indicator (♠) should face your body.
6. Remove and discard release paper from skin barrier.
7. Remove center portion of tape release paper.
8. Holding pouch by remaining strips of tape backing paper, center opening in skin barrier over stoma. If using a pouch *without tape*, hold skin barrier by side edge and center over stoma.

Gently press skin barrier against skin until barrier is contacting skin at all points. Smooth skin barrier against skin. Avoid wrinkles.

Remove remaining strips of backing paper and gently press adhesive against skin.

Emptying a Drainable Pouch

Remove clamp. Direct open end of pouch into toilet. Wipe end of pouch with a tissue and reclose.

Emptying Pouches with Lock 'n Roll Closure

9. Unfold pouch closure.
10. To drain, hold each side of pouch tail and pinch (squeeze) sides. Clean inside of pouch with a tissue.

Reclose pouch per Figures 3 and 4.

Emptying a Urostomy Pouch

Direct drain valve into toilet and rotate valve a half-turn. The drain valve is open when the teardrop indicator (♠) faces away from your body.

To close valve when pouch is empty, return valve to original position.

Using a Urostomy Drain Tube Adapter

11. Hold pouch drain valve and push adapter onto valve until it snaps into place.

Insert connector from bedside drainage collector into tubing of adapter.

12. Rotate valve a half-turn. The drain valve is open when the teardrop indicator (♠) faces away from your body.
13. Before removing drain tube adapter, close valve by rotating a half-turn. Grasp valve with one hand. With other hand, squeeze connector portion of adapter and pull it off valve.

Note: Caps are packed with urostomy pouches for use as drain valve covers.

Filter Covers (for Closed and Drainable Pouches only)

14. Cover the filter on the outside of the pouch when swimming or bathing. Remove afterwards.

Avoid storage in very cold temperatures.

Using a Belt

With belt buttons facing away from you, insert one button into corresponding opening in belt tab and pull to lock securely in place.

Bring belt around body and repeat procedure with other end. Move plastic slide adjuster to find most comfortable belt length.

Pouch Removal

Before removal, empty pouch as described above. Gently peel the adhesive and skin barrier away from skin, beginning at the top and working downward.

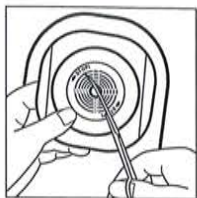
Notes:

DO NOT ALLOW POUCH TO OVERFILL.

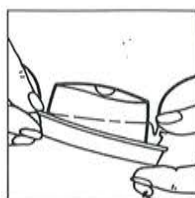
Drain pouch when 1/3 full. Change pouch if leakage occurs.

DO NOT FLUSH POUCH DOWN TOILET.

THE USE OF A SKIN BARRIER WIPE IS NOT RECOMMENDED WHEN USING A FLEXTEND SKIN BARRIER.



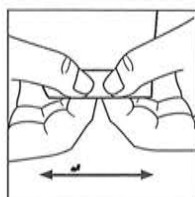
1



2



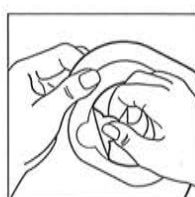
3



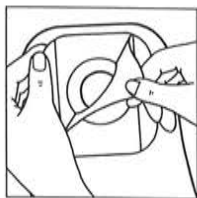
4



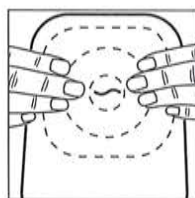
5



6



7



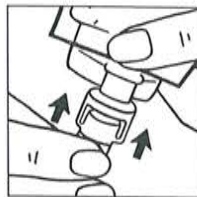
8



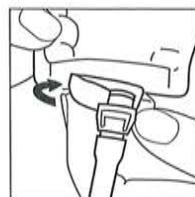
9



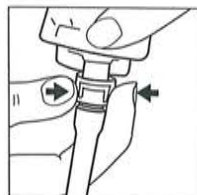
10



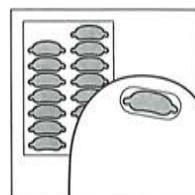
11



12



13



14