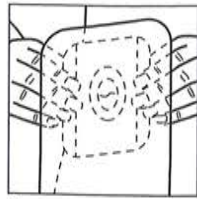
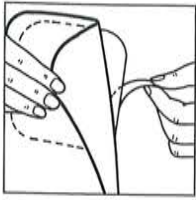




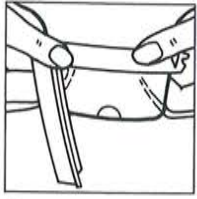
1



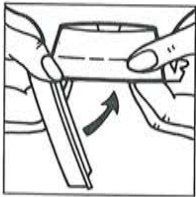
2



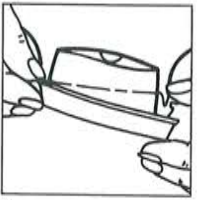
3



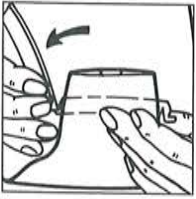
4



5



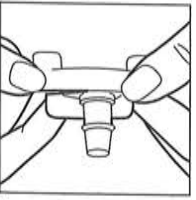
6



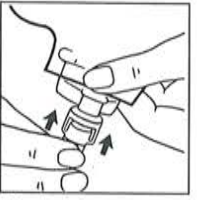
7



8



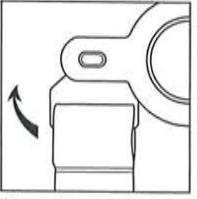
9



10



11



12

Ostomy Pouch Instructions

Applying a Pouch with Karaya Ring

The karaya ring should fit snugly around the stoma for maximum skin protection. Pouches with karaya ring and adhesive may be worn with or without a belt. Skin should be clean and dry before pouch is applied.

Begin by peeling the protective covering from back of karaya ring.

1. Remove large center section of backing paper from adhesive.
2. Hold pouch by the sides and center karaya ring over stoma. Press against skin.

Carefully smooth down exposed adhesive, avoiding wrinkles.

3. Remove two remaining strips of paper from sides and continue to smooth adhesive.

Applying a Pouch with Adhesive Only

Remove large center section of backing paper from adhesive patch.

Hold pouch by the sides and center opening over stoma. Carefully smooth down exposed adhesive, avoiding wrinkles.

Remove two remaining strips of paper from sides and continue to smooth adhesive.

Using a Drainable Pouch

4-7. For a drainable pouch, apply pouch clamp.

Draining a Urostomy Pouch

8. Direct drain valve into toilet and rotate valve a half-turn.
9. To close valve when pouch is empty, return valve to original position.

Using the Urostomy Drain Tube or Adapter

10. Hold pouch drain valve and push connector of drain tube or adapter onto valve until it snaps into place.
11. Insert connector from bedside drainage collector into bottom of drain tube and rotate valve a half-turn.

To remove drain tube, close drain valve by rotating handle back to the right. Grasp drain valve with one hand, and with other hand, grasp and squeeze connector portion of drain tube and pull it off drain valve.

Using a Belt

12. With buttons on belt facing away from you, insert one button into corresponding opening in belt tab on pouch gasket. Turn belt so button locks securely. Bring belt around body and repeat procedure with other end. Move plastic slide adjuster to find most comfortable belt length.

Note: Use of belt is optional.

Removing the Pouch

Carefully lift an edge of adhesive and peel downward, gently pushing skin away from adhesive. Dispose of used pouches appropriately.

Do not flush down toilet.

Correct size is essential. Remeasure stoma frequently, especially before reordering pouches.